

# Onan on Propane

George Beckman  
September 2015

# No Guarantees

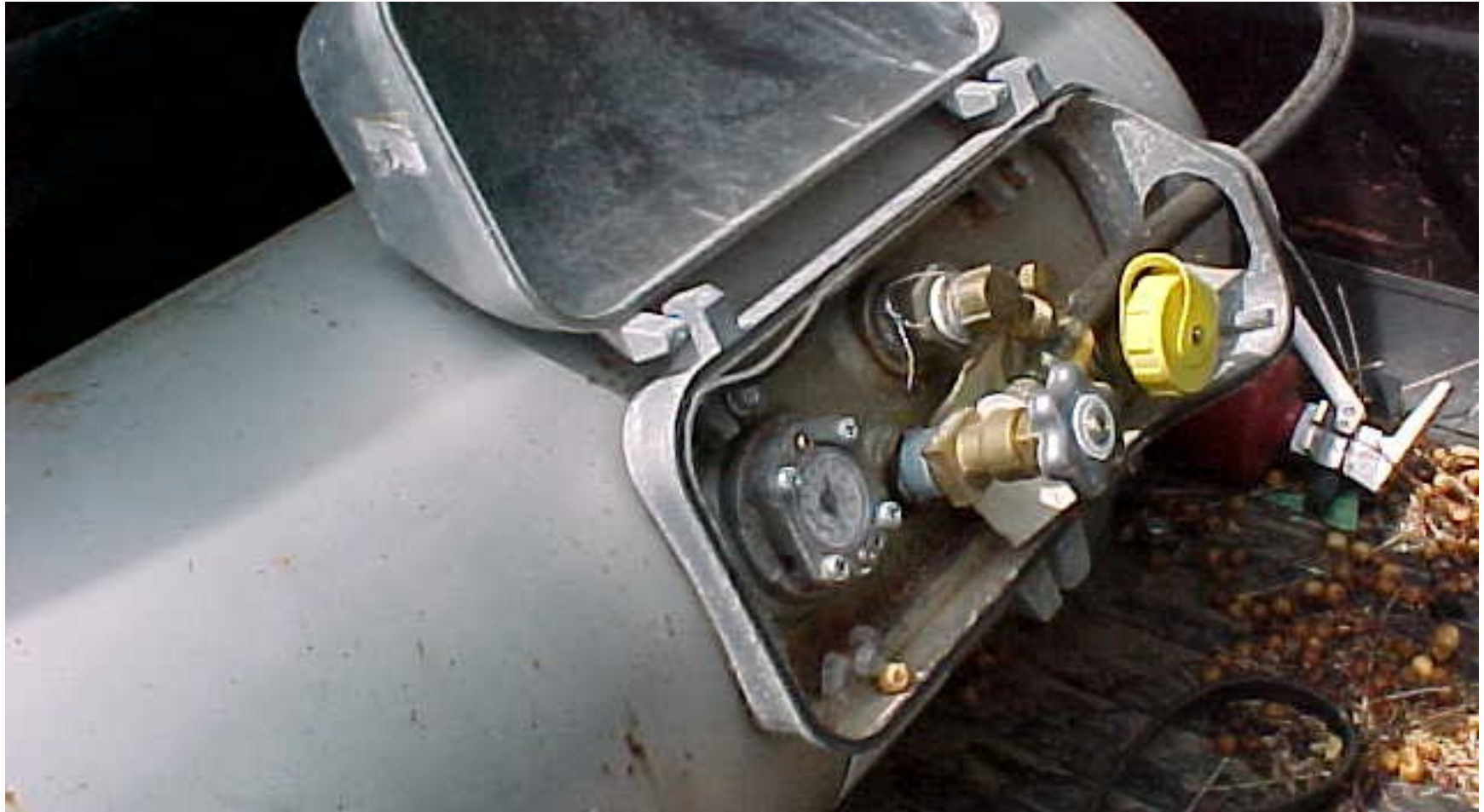
My Onan has been running on propane for several years. However, I make no guarantees as to functionality, safety or design.

As with any GMC upgrade, proceed at your own risk.

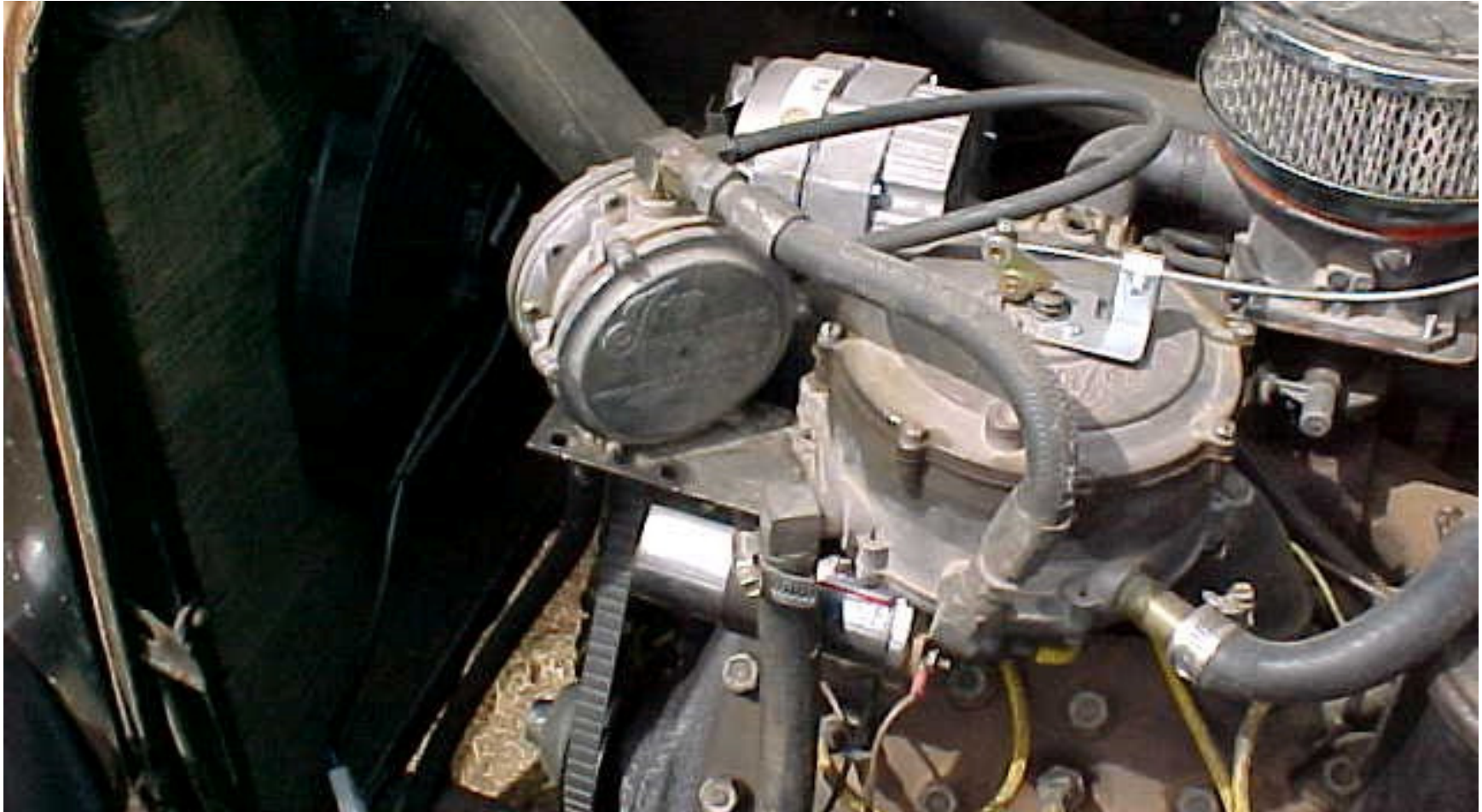
# Propane Lover



# Pickup Tank



# Regulator



# I Got the Good Wife



# I'm Loosing Brain Cells, Here!



# My Dirty Onan



# Existing “Adaptor”



# Company I Used

- <https://www.propanecarbs.com/onan.html>

**PROPANECARBS.COM**  
ALTERNATE FUELS TECHNOLOGIES, INC

CALL US TOLL FREE **1-877-425-8383**

*For Orders, prices, availability or general questions & information*

HOME

CONVERSION KITS

PARTS DEPARTMENT

CONVERSION VIDEOS

STEP-BY-STEP INSTALL

RESOURCES



## GENERATOR & SMALL ENGINE TRI-FUEL CONVERSION KITS

Our Propane and Natural Gas Conversion Kits are available for generators, welders, concrete saws and more and are **EASY TO INSTALL!**

## Three Ways

- Spud (drill a hole)
- Insert (dual fuel)
- Complete Carb System \$\$\$\$

# I Went With Adaptor Ring

This means a ring goes in between the Carburetor and the Air Cleaner.

# My Kit Contained

- Regulator
- Lock Out Safety Switch
- Adaptor

# Regulator



# Fuel Lock Out



# Adaptor



# Removed Fuel Pump

I removed the fuel pump and plugged the line at the fuel tank.

So I only use propane.

# Propane Supply

I went to a propane shop to get the hose and the connections to my existing tank. I felt safer having a fellow who sells propane and propane accessories do the work.

# The Glitch

6.0NH- 1R/9000E

SERIAL NO. 0274724079

**IMPORTANT-** ALWAYS GIVE ABOVE NOS.  
WHEN ORDERING PARTS

A.C. VOLTS	120	PH.	1
K.V.A.	6	KW	6
P.F.	1.0	AMPS.	50
		Hz	60
D.C. VOLTS		AMPS.	
WATTS			
R.P.M.	1800	BAT.	12

MANUFACTURED BY  
ONAN  
DIVISION OF ONAN CORPORATION

# Adaptor Was Too Small



1 3/8"



# Wiring

The fuel lock out is powered by the wire that used to power the Onan fuel pump.

When the Onan is off no propane can flow to the regulator or Onan intake.

# Finished Carburetor



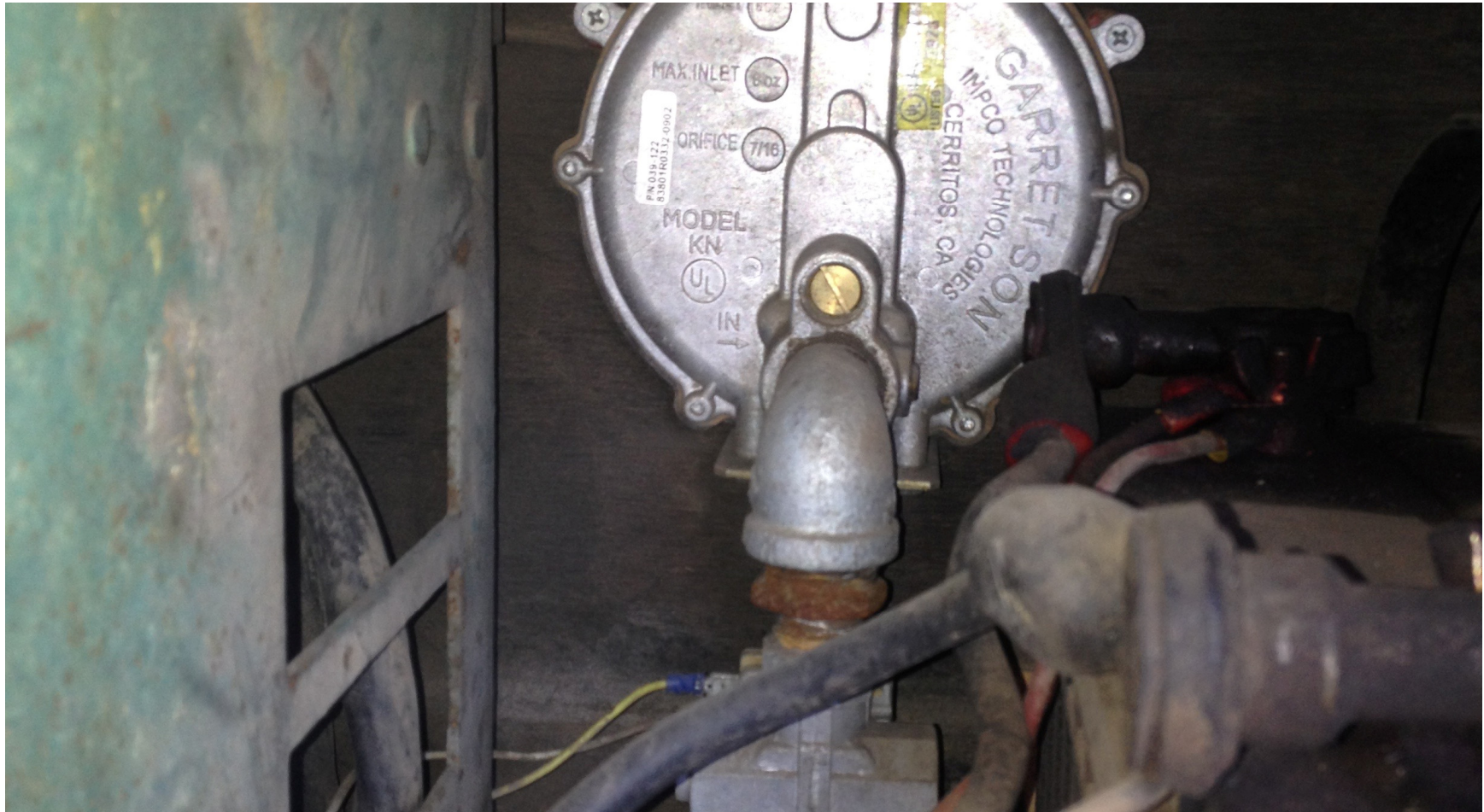
# How It Was



# No Adjustment Needed

I made no adjustments.

# Rear Battery Box



# Propane Tank



# Runs Like A Top



# Happy Ruth



# George Beckman

[gbeckman@pggp.com](mailto:gbeckman@pggp.com)